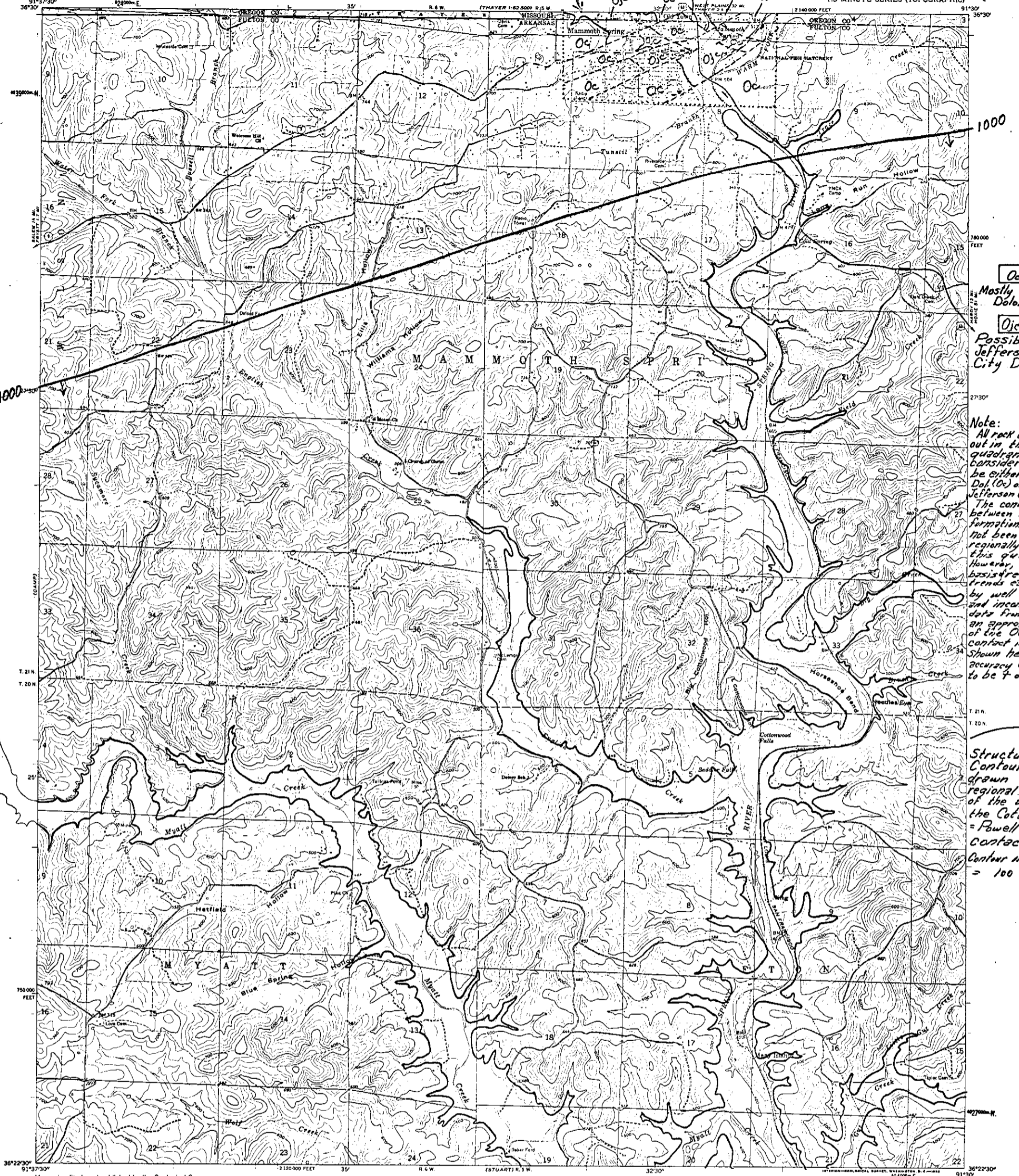


Geologic map of the Mammoth Spring Area
Thesis by William J. Hedden, U. of Mo., Rolla



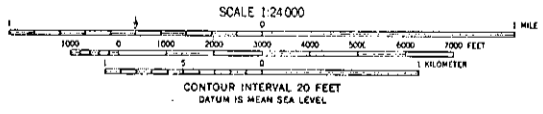
Oc(?)
Mostly Colter
Dolomite

Ojc(?)
Possibly Jefferson
City Dolomite

Note:
All rock cropping
out in this
quadrangle is
considered to
be either Colter
Dol. (Oc) or
Jefferson City Dol.
The contact
between these
formations has
not been mapped
regionally in
this quadrangle.
However, on the
basis of regional
trends established
by well data
and inconclusive
data from outcrop
an approximation
of the Oc-Ojc
contact is
shown herein--
accuracy estimated
to be +/- 100'

**Structure
Contours**
drawn on
regional trends
of the top of
the Colter Dol.
= Powell-Colter
Contact.
Contour interval
= 100 ft.

Mapped, edited, and published by the Geological Survey
Control by USGS and USO&GS
Topography by photogrammetric methods from aerial
photographs taken 1959. Field checked 1962
Polyconic projection, 1927 North American datum
10,000-foot grid based on Arkansas coordinate system, north zone
1000-meter Universal Transverse Mercator grid ticks,
zone 15, shown in blue
Fine red dashed lines indicate selected fence and field lines where
generally visible on aerial photographs. This information is unchecked



ROAD CLASSIFICATION

Heavy-duty	Light duty
Medium-duty	Unimproved dirt
U.S. Route	State Route

E.E. Glick, USGS, 1974
MAMMOTH SPRING, ARK.—MO.
N3622.5—W9130.7.5

THIS MAP COMPLIES WITH NATIONAL MAP ACCURACY STANDARDS
FOR SALE BY U.S. GEOLOGICAL SURVEY, DENVER 25, COLORADO OR WASHINGTON 25, D. C.
THE ARKANSAS GEOLOGICAL AND CONSERVATION COMMISSION, LITTLE ROCK, ARKANSAS,
AND BY THE MISSOURI GEOLOGICAL SURVEY, ROLLA, MISSOURI
A FOLDER DESCRIBING TOPOGRAPHIC MAPS AND SYMBOLS IS AVAILABLE ON REQUEST

MASTER COPY